



29ª FEIRA INTERNACIONAL
DA INDÚSTRIA ELÉTRICA, ELETRÔNICA,
ENERGIA E AUTOMAÇÃO.

abinee²⁰¹⁷TEC



GTDC

GERAÇÃO, TRANSMISSÃO, DISTRIBUIÇÃO
E COMERCIALIZAÇÃO DE ENERGIA

A nighttime aerial view of a dense cityscape, likely Hong Kong, with numerous illuminated skyscrapers and buildings. The lights create a vibrant, glowing effect against the dark sky. The water of a harbor is visible in the background, reflecting some of the city lights.

Sistemas de armazenamento de energia: microgrids e tendências para o setor elétrico

Microgrids

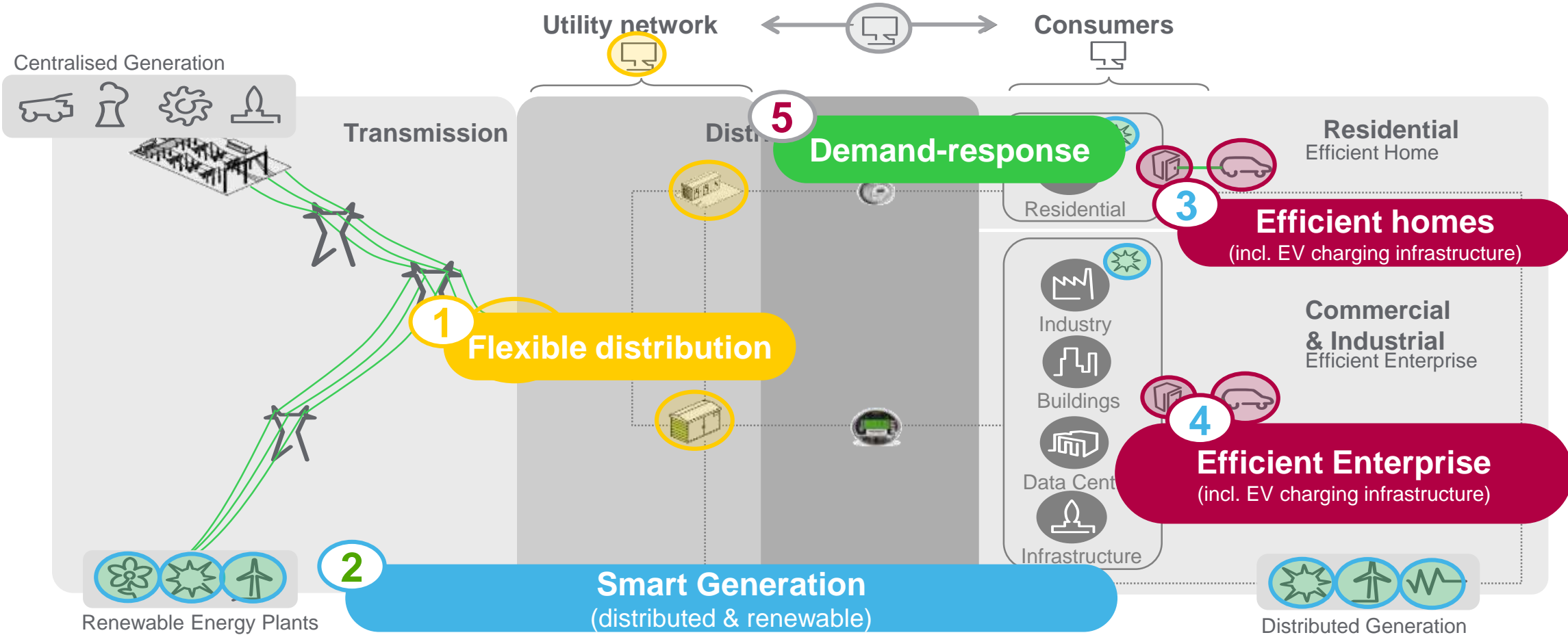
Presented by: Claudio Oliveira, Smart Grid Architect
claudio.oliveira@Schneider-electric.com

Life Is On

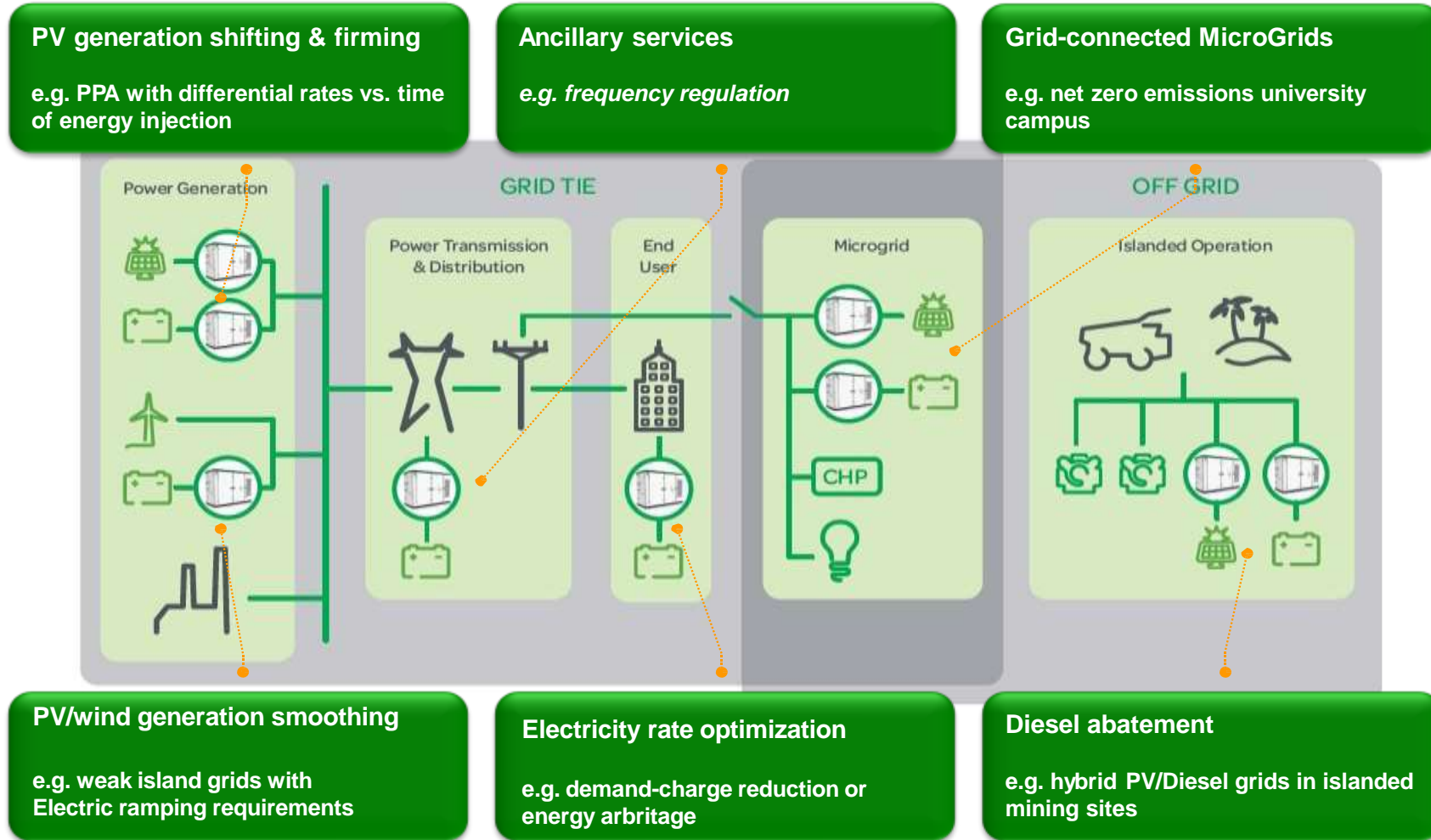
Schneider
Electric

Our 5 Smart Grid Domains

Optimize Supply and Demand



Storage Applications



Improvements

Utility

- Automatic Demand Response
- Islanding & load shedding
- Massive integration of DER

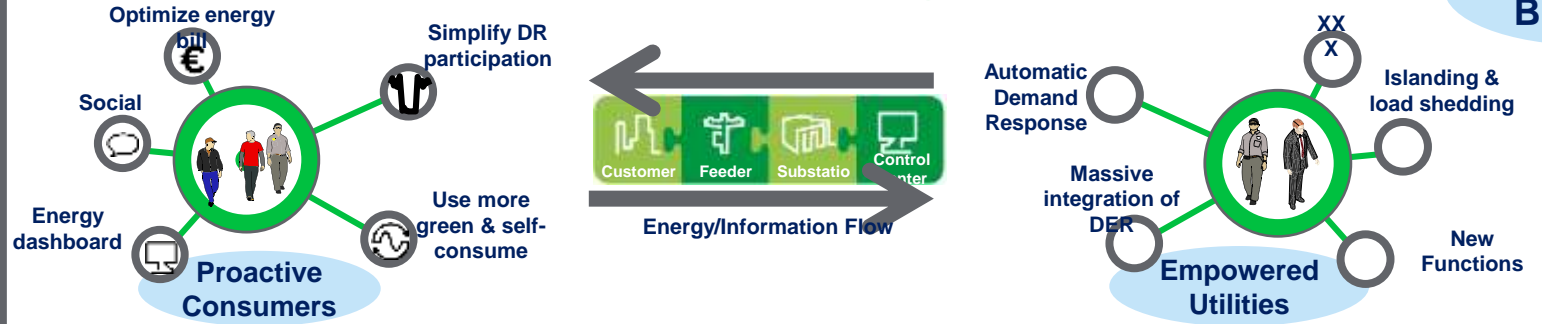
Consumer

- Self-Production
- Backup

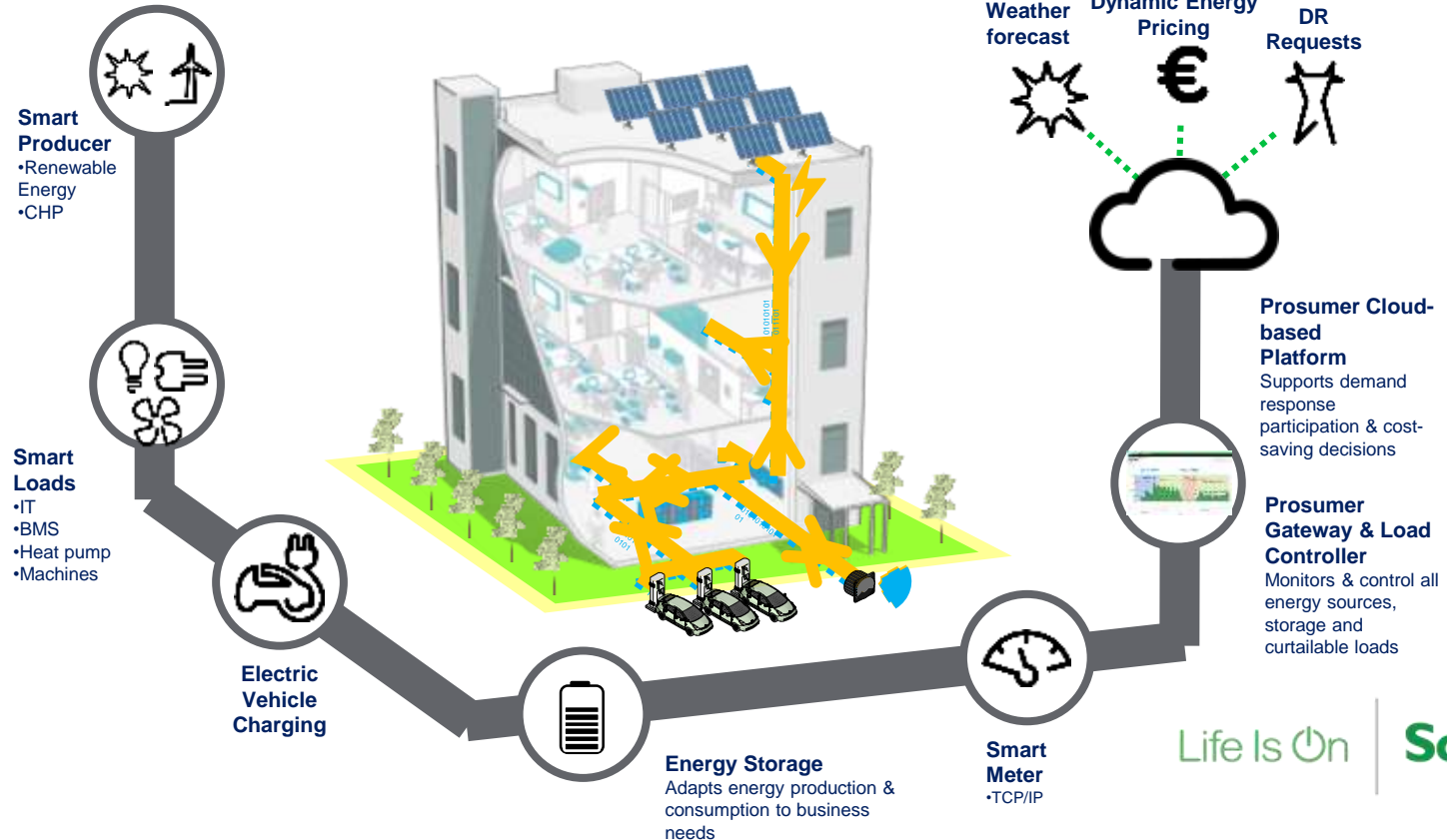
Benefits

- Efficient Building
- Flexible Building
- Auto-consumption of green energy
- Reliable Power
- Bill optimization

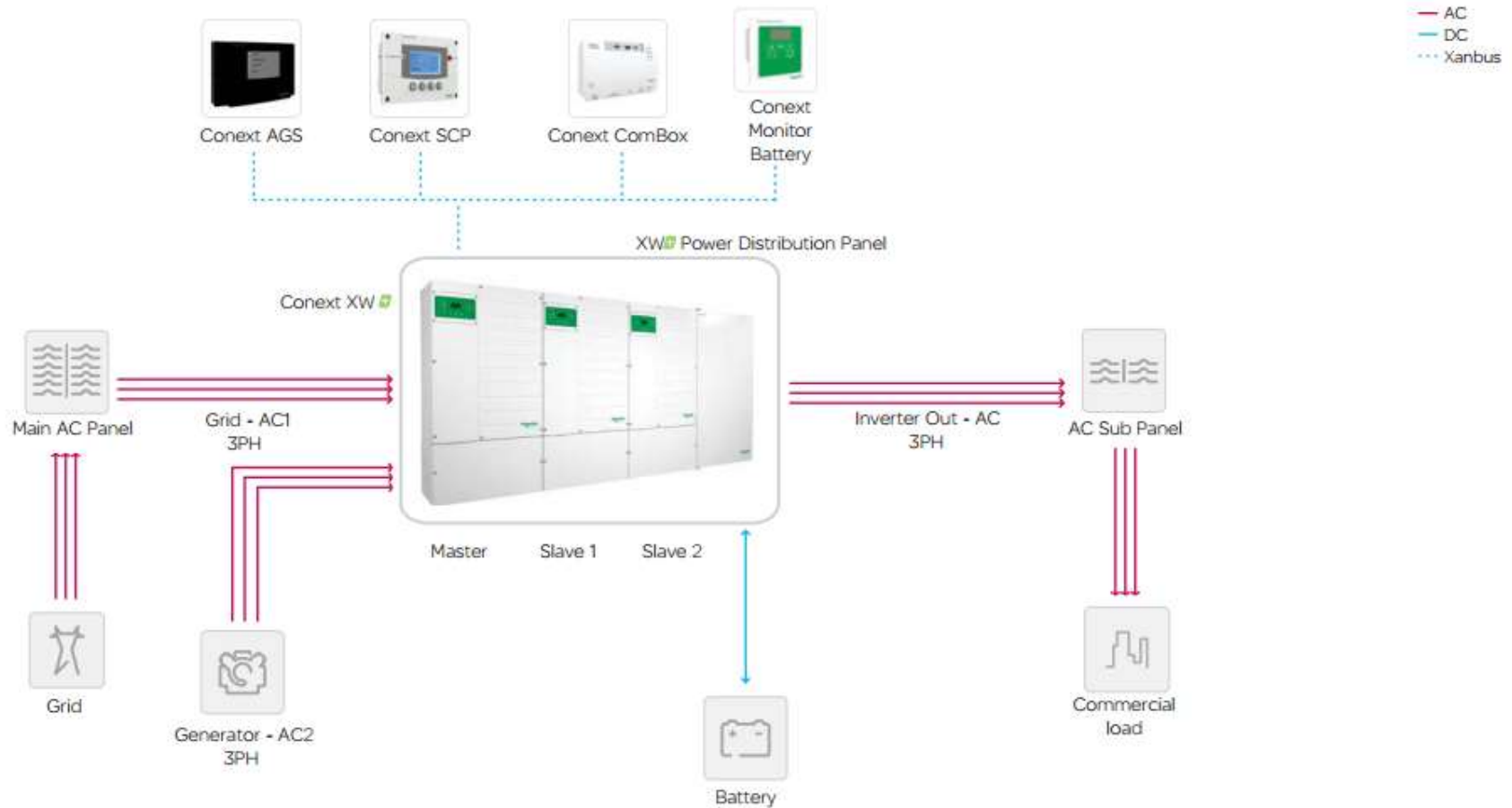
Small/Medium Microgrid



Prosumer Building

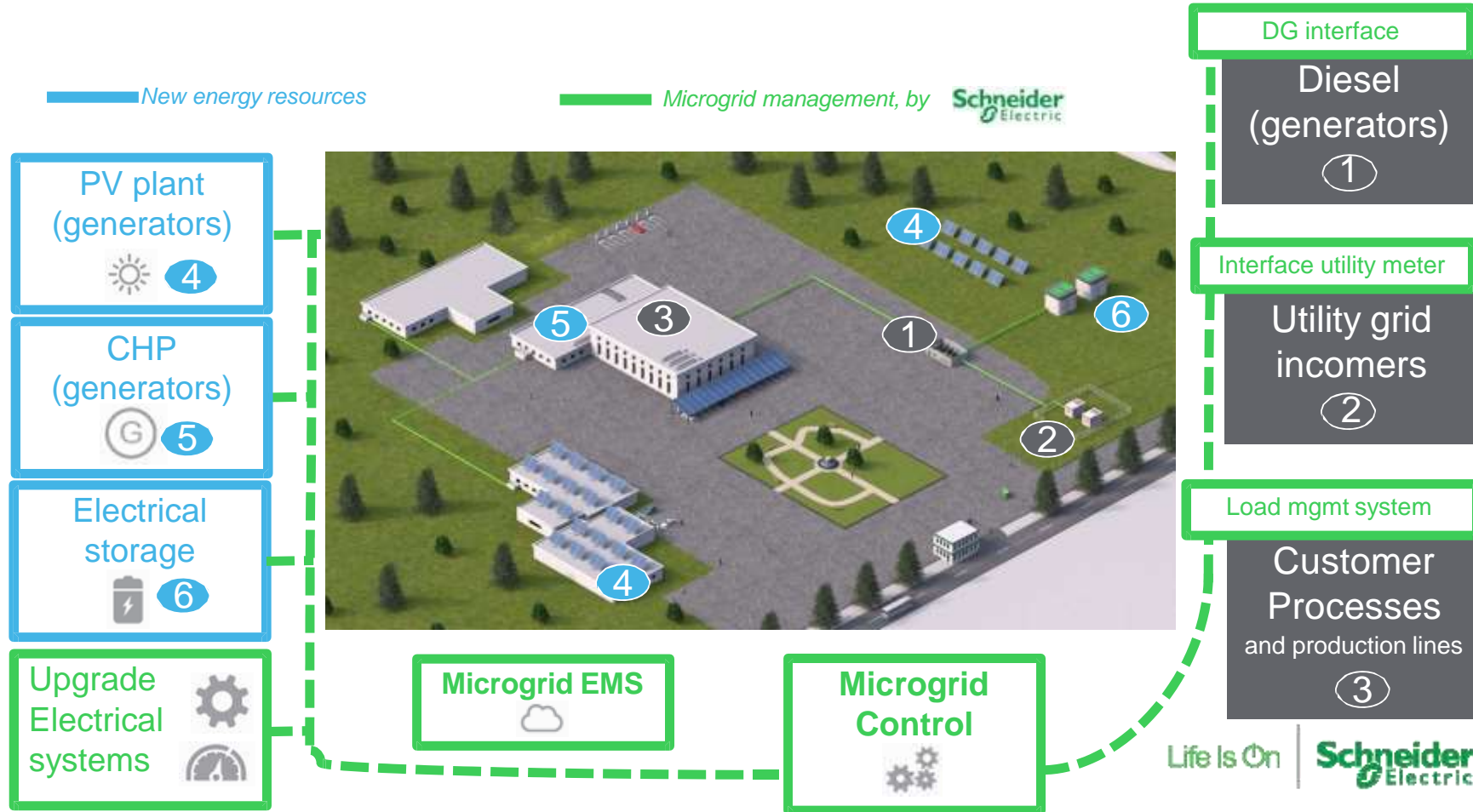


Conext XW+ Small and Medium Storage Solution



Three-phase (120/208VAC or 230/400VAC) solution with optional AGS/Generator (21.0 or 25.5 kW)
Three XW+ units are required for three-phase, one per phase.

Large Microgrid



ES Box Utility Scale Energy Storage Solution



ES Box

- Peak Power: 1 MW
- Max Energy: ~1 MWh
- Storage up to 10 MW

Applications

Renewable Energy Generation

- Renewable Energy Shift
- Renewable Energy Smoothing

Power Transmission and Distribution

- Ancillary Services
- Peak Shaving
- Investment Deferral

Large Commercial/Industrial

- Electricity Rate Optimization
- Micro Grids

Life Is On



Utility side



**Remote Conext
Control**



**Advanced
Distribution
Management
System**



**Weather
Intelligence**



**Geospatial
Information
System**



**Asset
Performance
Management**

Customer side



Prosumer Microgrid



Access to Energy



Demand Response
- C&I



Rural Electrification



Energy University

Life Is On

Schneider
Electric