



COMPANY PROFILE



Outline:

- SDEC Slogan
- Business Concepts
- History
- Company & Organization
- Distribution about Market & Industry
- Quality Assurance
- Reliable Testing Report of White LED
- Conclusion



SDEC SLOGAN



SMART DESIGN
EXACTLY CONTROL

智慧設計 品質嚴選



Business Concepts

『Smart Design, Exactly Control』

- Service Belief :

- Customers are paramount !!
- We build close & long-term relationship with our customers to make win-win situation !

- Quality Belief :

- Quality is from design, but not from fabrication.

- Production Belief :

- Professional design , Strict quality control !



History of SDEC

- 1991 : Founded & started agent business of LCD(M)
- 1994 : Established Factory in Taiwan , started own design & manufacture for LCM
- 1996 : Established Hui-Chou Factory in China
- 1997 : Certificate of ISO 9001
- 2002 : Bought new building for Taiwan head office
- 2004 : Set Internal Sales Department in China
- 2004 : Prepared for public
- 2005 : Established Factory PROSPER in China
- 2005 : In accordance with RoHs of EU Standard

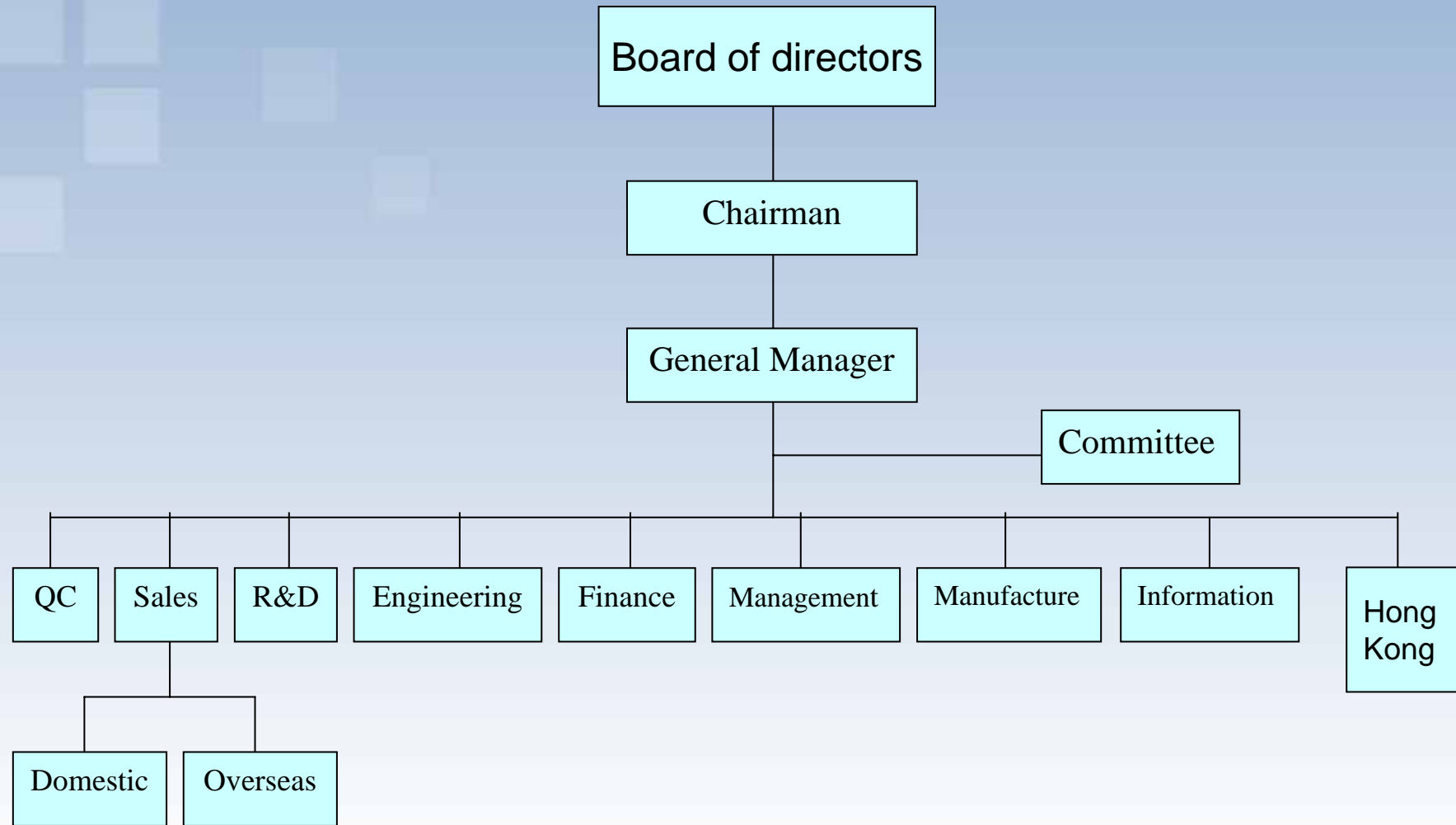


Company Introduction

- Capital : USD1,500,000
- Employees : about 300 people
- Organization (6 sections) :
 - Management → 7 people
 - Finance → 4 people
 - Salespeople → 15 people
 - R&D → 15 people
 - QC → 40 people
 - Manufacture → 200 people



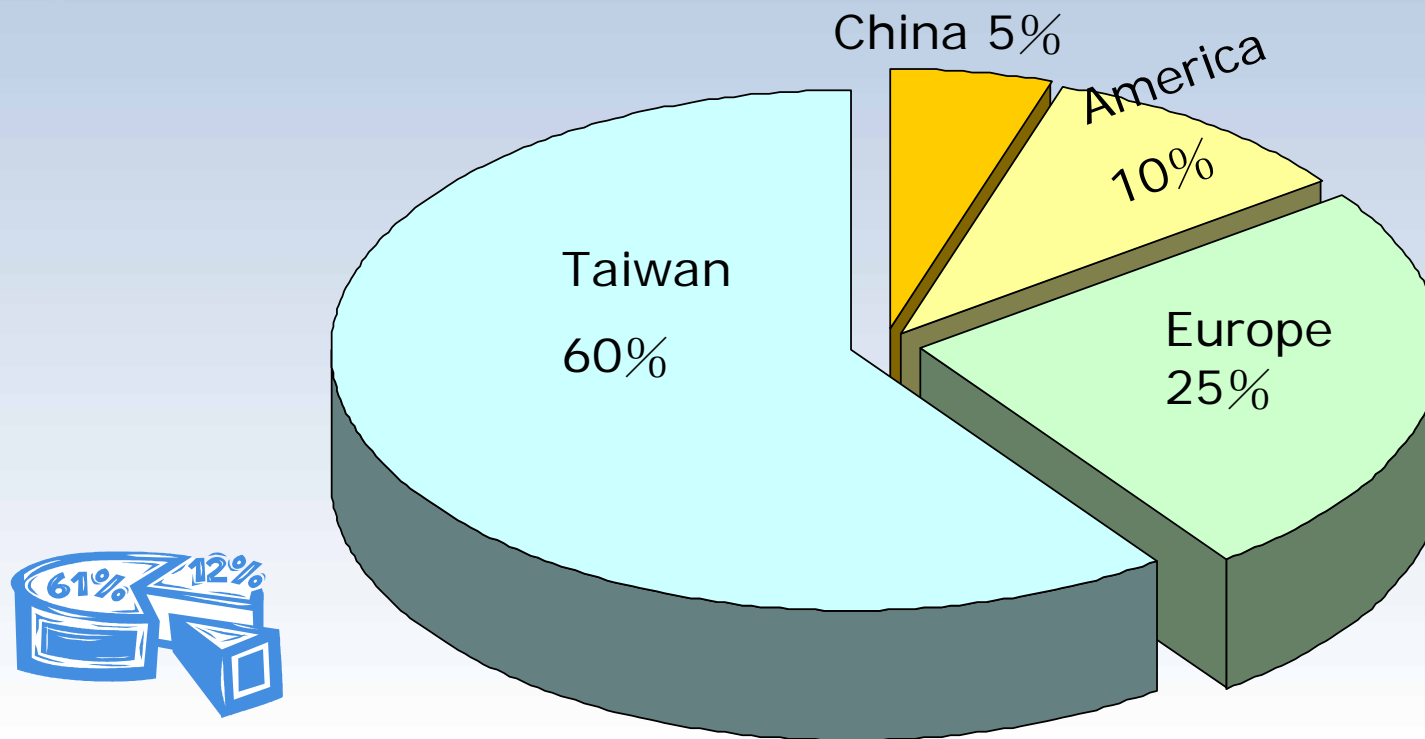
Chart of Organization



Market Share

Established worldwide, SDEC's products are used to Asia, Europe, and America.

The chart shows as following:



Industry Distribution (I)

Our products are widely used for many kinds of industries, and we service over thousands of companies.



•Telecommunication:

Ariata Systems Corporation(安立達)、 Mobitai Communication ISP(東訊)、 Uniphone Telecommunication Co., Ltd.(聯盟)、 Auto Telecom Company (ATC)(鼎翰)、 Takaotek Corporation(高塑)、 Aptdio Company Inc.(金葉)



•Network :

Tailyn Communication Co., Ltd.(台林)、 Tainet Communication System Corp.(台聯)、 Lanner Electronics Inc.(立端)、 Loop Telecommunication International, Inc(星通)



•Audio & Video :

Arima Computer Corporation(華宇)、 Hanspree(翰斯寶麗)、 EMERSON 、 義聯



Industry Distribution (II)

•CD Copier :

An Chen Computer Co., Ltd.(安辰)、Wytron Technology Co., Ltd.(慧全)

•Security System :

Taiwan SECOM(中興保全)、Heart Enterprise Co., Ltd.(倬茂)、Pongee Industries Co., Ltd(鵬驥)、Taiwan Jantek Electronics, Ltd.(台信)、Leegood Company(一卡通)



•MP3 :

亞格斯、Advance Multimedia internet Technology Inc.(永洋)



•Testing Instrument :

Advantech Co., Ltd(研華)、Chroma Ate Inc.(致茂)

•POS System :

Firich Enterprise Co., Ltd.(伍豐)、拍檔、燐埔



•Others :

CASIO、Gyrosignal Technology(捷安訊)、Roland Taiwan Enterprise Co., Ltd.(樂蘭)

Quality Assurance

『Quality Emphasis』

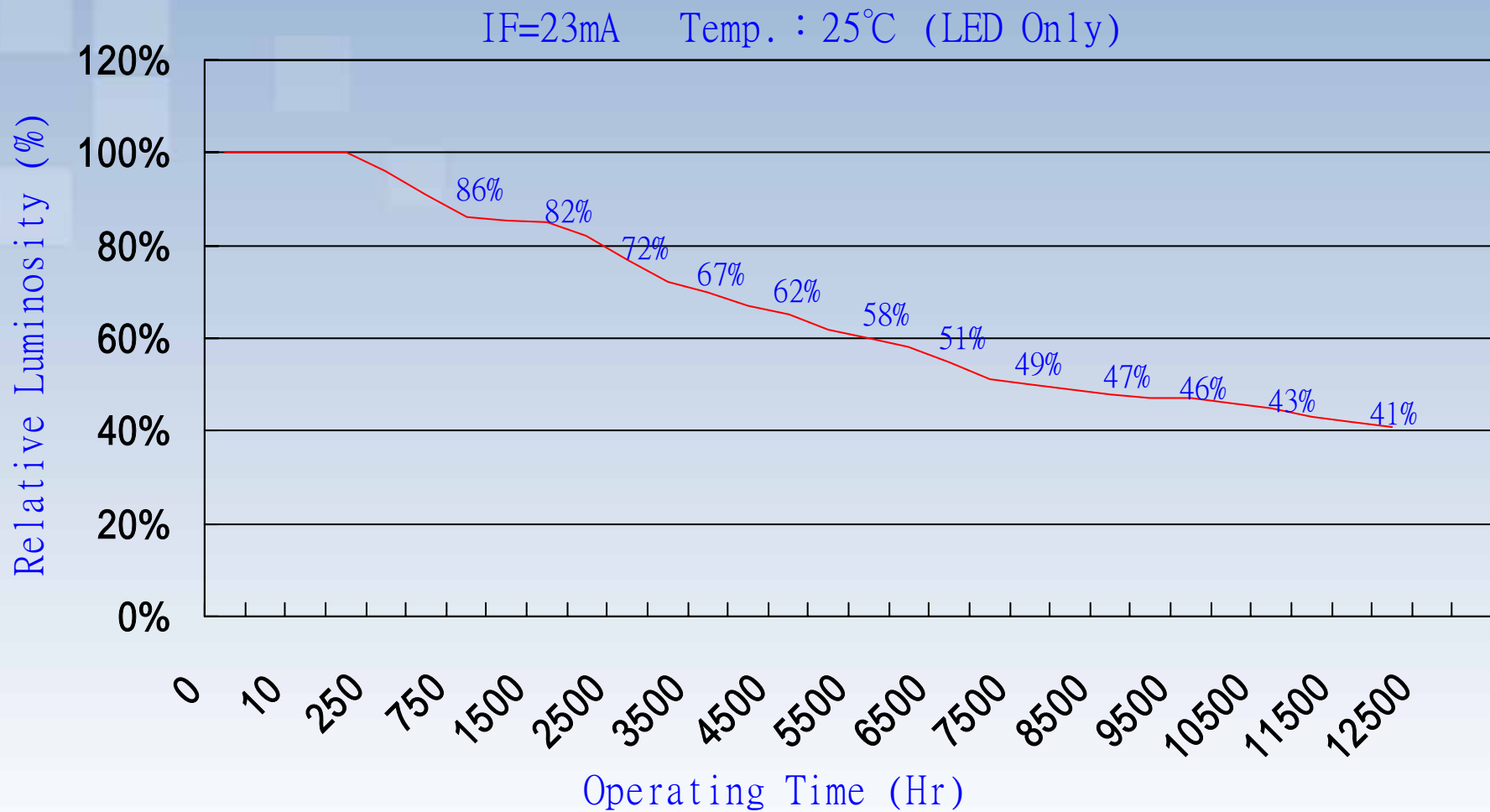
- Incoming QC
- Into-Process QC
- Statistic of IPQC
- Processing Program of Abnormal Products
- Procedure Improvement
- Process of Equipment Adjustment
- Product Guarantee
- Customer Satisfaction

- 1997: IS9001 Certificate approved
- 2004: In accordance with RoHs of EU Standard

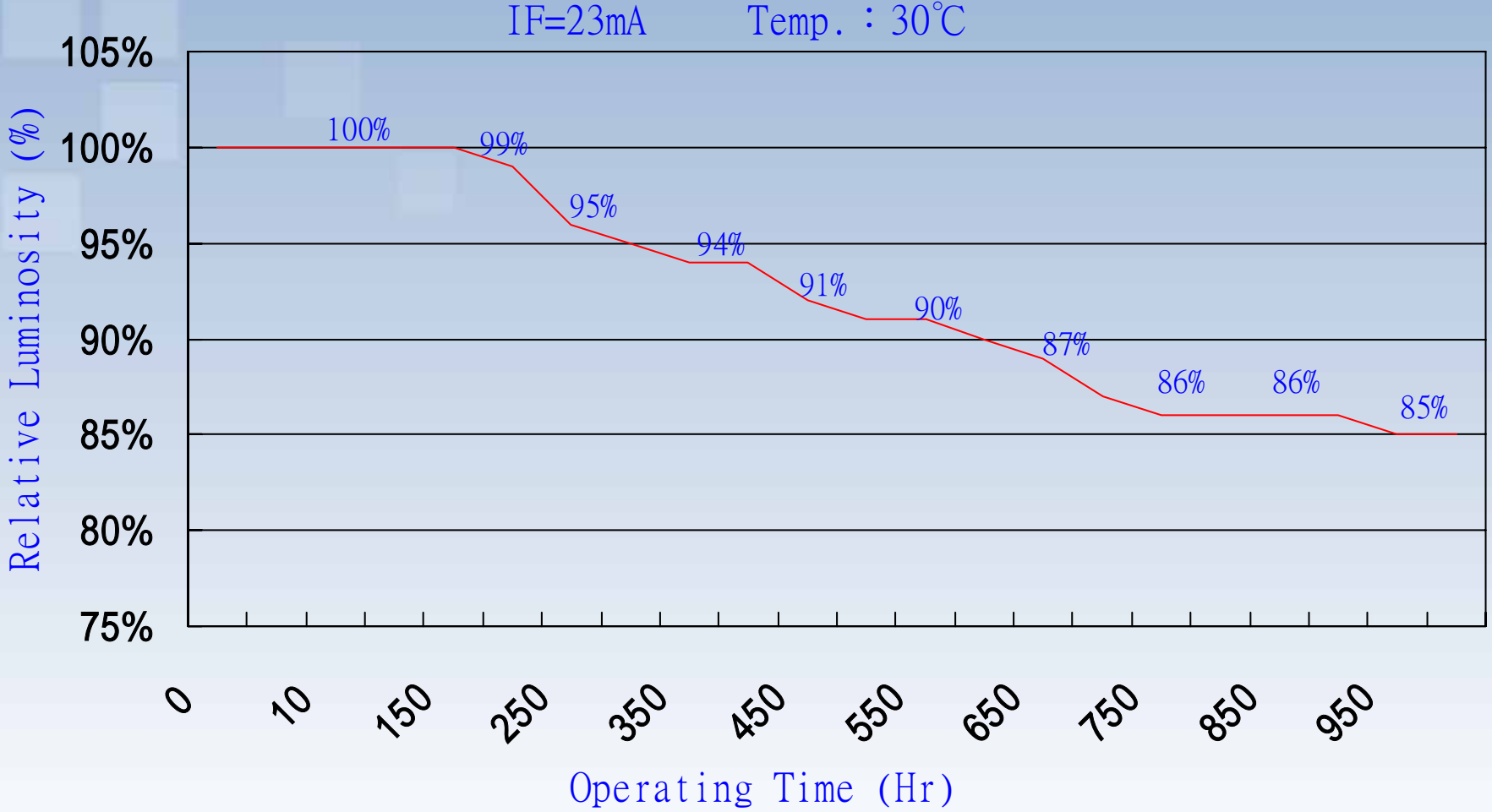
• Companywide Quality Control (CWQC) has been practiced in SDEC since 1998. We keep the best quality to win the customers' trust ◦



White LED Lifetime Data in 12000 Hrs



Reliable Testing Report in 1000 Hrs



Conclusion

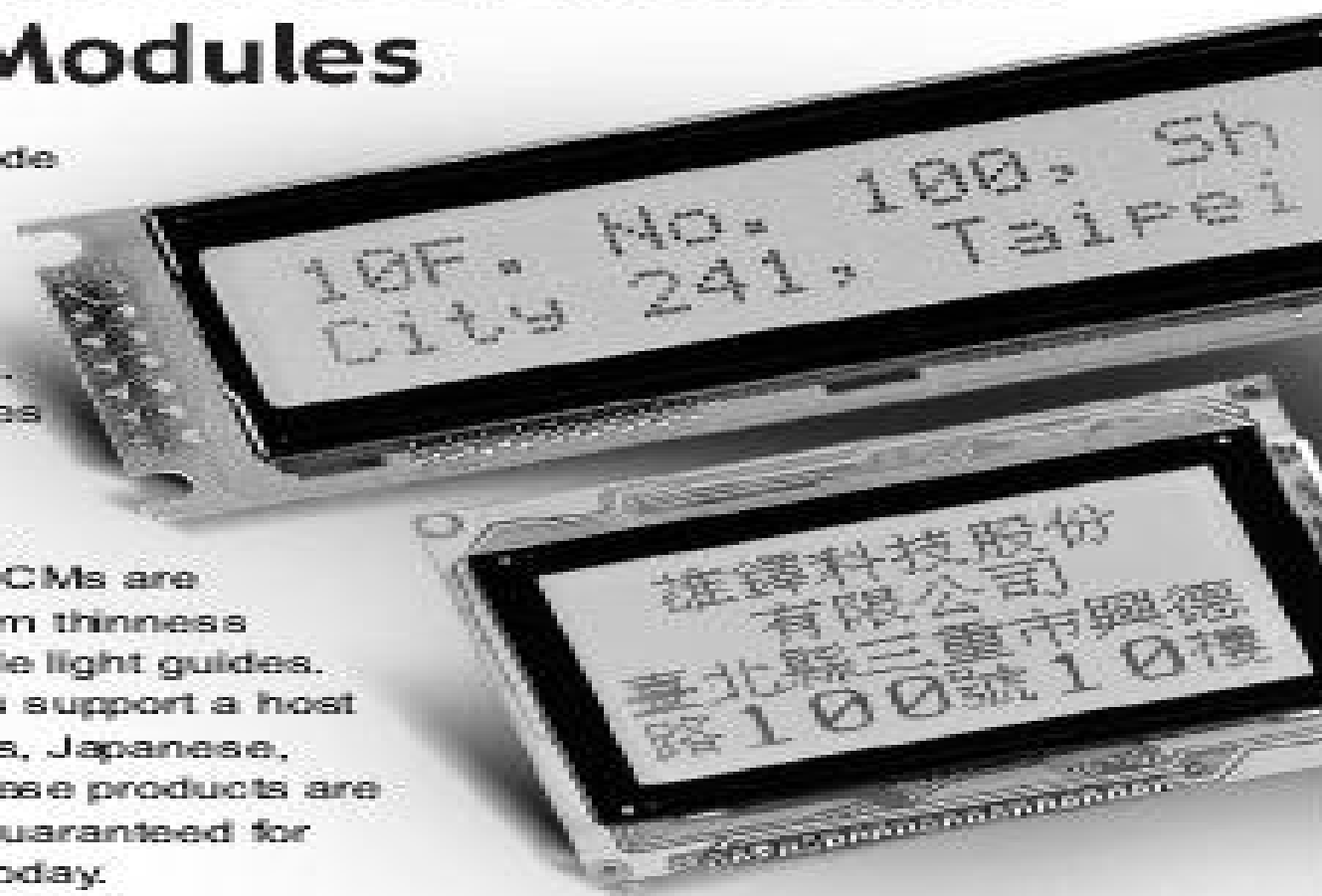
SDEC = Customer = Win-win

- Brand Advantage
- Design Advantage
- Technical Support
- QC Advantage
- Competitive Price
- Excellent Training System
- Enthusiastic After-sales Service



A Wide Variety of Graphic and COG LCD Modules

Manufacturers worldwide come to us for over 200 different LCMs – including character, graphic and the latest chip-on-glass modules. Source graphic modules in a wide range of backlight colors, in resolutions as large as 320 x 240. Our COG LCMs are designed with maximum thinness and easily customizable light guides. Our character modules support a host of European languages, Japanese, Russian and more. These products are RoHS compliant and guaranteed for one year. Contact us today.



SDEC Technology Corp.

10F, No. 100 Shing De Rd., San Chung City 241, Taipei Hsien, Taiwan

Tel: (886-2) 8512 1288 Fax: (886-2) 8512 2828 / 6635 7823

E-mail: sdec8405@ms6.hinet.net • sdec@sdec.com.tw

www.sdec.com.tw • www.globalsources.com/sdec.co

